

Data Sheet

Throttle valves

VOH 30 M, VOCH 30 M and VOCH 30 MC



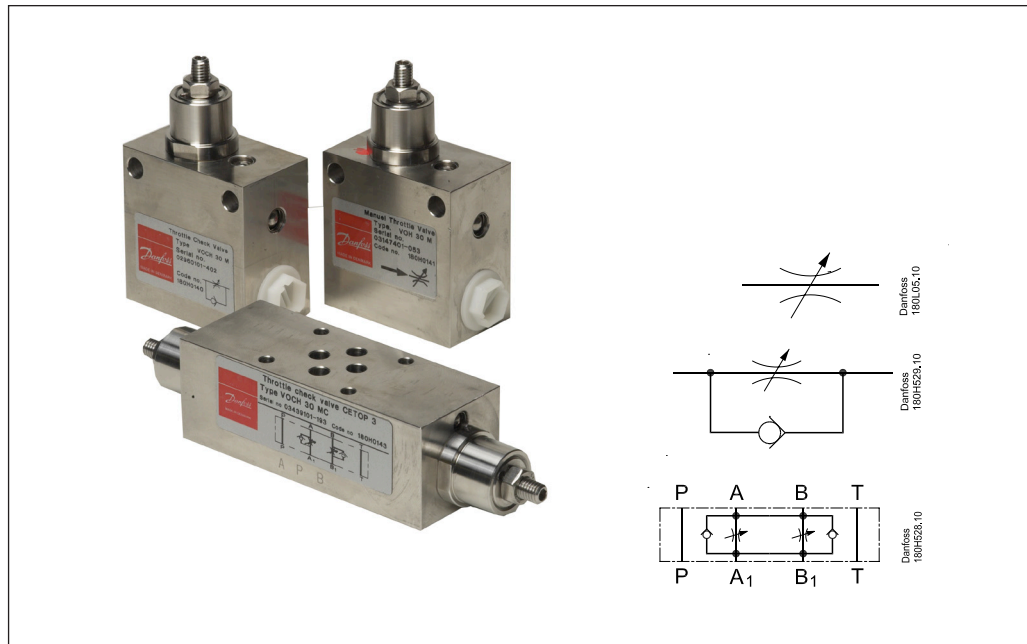
ЮГОВ - Проект

інженерно-виробниче підприємство

Офіційний дистриб'ютор
Danfoss в Україні



ugov.ua



Manually Variable Throttle Valve

- VOH 30 M (inline mounted)
- VOH 30 M regulates the flow in both directions.

Manually Variable Throttle Check Valve

- VOCH 30 M (inline mounted)
- VOCH 30 MC (cetop 3 block mounted)

VOCH 30 M and VOCH 30 MC regulate the flow in one direction and allow for free passage in the opposite direction via an integrated check valve.

Application

The valves regulate flow and thus e.g. the speed of an actuator (motor or cylinder). The valves are designed for ordinary tap water without additives of any kind, but are also suit-

able for applications operating on air, neutral gases and oil compatible with the NBR O-ring material used.

Function

The valves are designed to operate according to the needle controlled valve principle.

VOCH 30 MC is a double throttle check valve working as an intermediate block to a cetop 3 standard, consisting of a block, VOCH 30 MC and directional valve, type VDH 30EC4/3.

Advantages

- Accurate flow regulation
- Flow rates easy to set

- Corrosion resistant surfaces, mainly stainless steel
- Adjustment position secured with lock nut

Variants

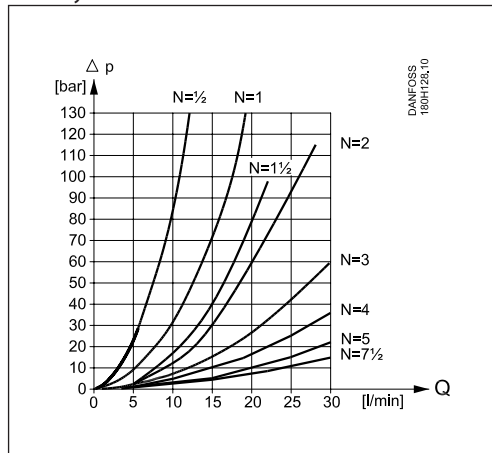
The valve housing comes as standard in stainless steel AISI 304 (W.nr. 1.4301). On request the valve housing for VOCH 30 MC is available in stainless

steel AISI 316L (W.nr. 1.4401). Please contact your Danfoss sales organization.

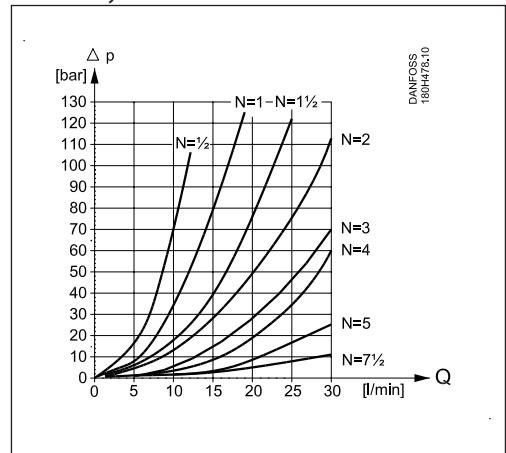
Flowrate curves
(for water)

VOH 30 M
Pressure losses at various opening degrees

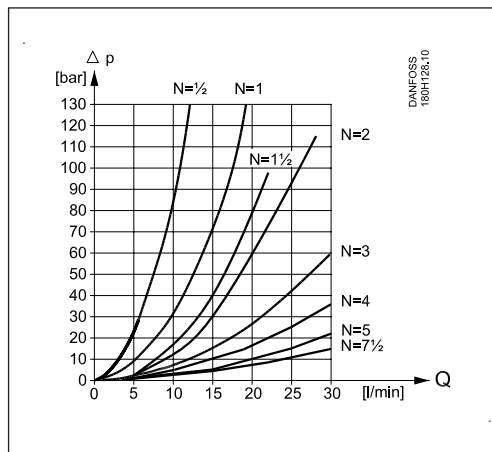
Primary flow direction



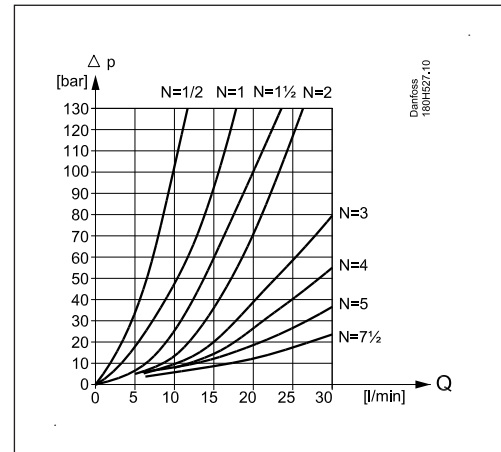
Secondary flow direction



VOCH 30 M
Pressure losses at various opening degrees



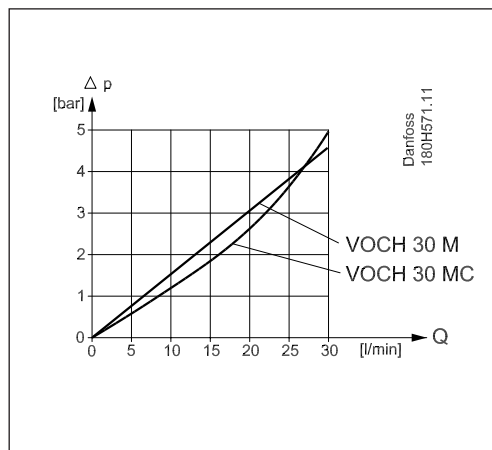
VOCH 30 MC
Pressure losses at various opening degrees



N is the number of rotations of the adjusting screw.

At N = 0 the valve is fully closed (lower position).

VOCH 30 M and VOCH 30 MC
Pressures drop across the check valve as a function of the flow



Mounting of inline valves

Inline valves are mounted in line in flow direction (follow the arrow on the valve) and fixed either

directly in the pipe connections or with bolts in the fixation holes on the valve.

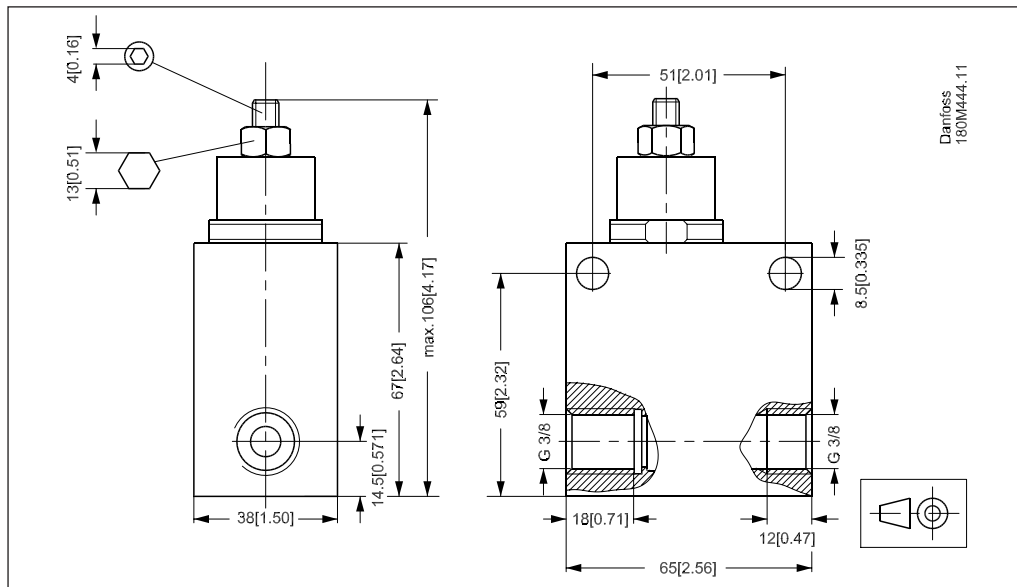
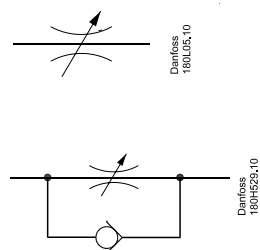
Mounting of valve on Cetop block

The valve is designed to be mounted on a block with cetop 3-port connection. Four stainless steel screws and four O-rings are supplied with the valve for mounting.

the threads on the screws with Molykote® D pasta from Dow Corning, or Klüber UH1 84-201 from Klüber lubrication, before mounting the valve.

Inline valves

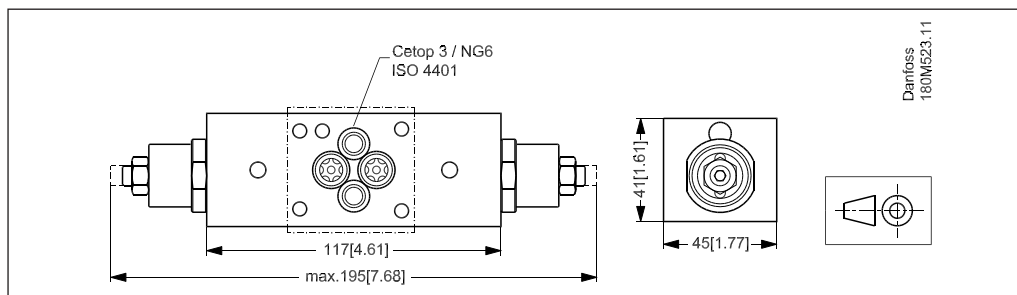
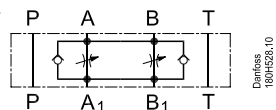
**Dimensions (mm)
VOH 30 M and VOCH 30 M**



CETOP valves

**Dimensions (mm)
VOCH 30 MC**

Double throttle check valve



ENGINEERING
TOMORROW



Danfoss A/S

High Pressure Pumps • danfoss.com • +45 7488 2222 • highpressurepumps@danfoss.com

Any information, including, but not limited to information on selection of product, its application or use, product design, weight, dimensions, capacity or any other technical data in product manuals, catalogues descriptions, advertisements, etc. and whether made available in writing, orally, electronically, online or via download, shall be considered informative, and is only binding if and to the extent, explicit reference is made in a quotation or order confirmation. Danfoss cannot accept any responsibility for possible errors in catalogues, brochures, videos and other material. Danfoss reserves the right to alter its products without notice. This also applies to products ordered but not delivered provided that such alterations can be made without changes to form, fit or function of the product.

All trademarks in this material are property of Danfoss A/S or Danfoss group companies. Danfoss and the Danfoss logo are trademarks of Danfoss A/S. All rights reserved.