

MAKING MODERN LIVING POSSIBLE

ЮГОВ -Проект
інженерно-виробниче підприємство

Офіційний дистриб'ютор
Danfoss в Україні



ugov.ua

Danfoss



Danfoss Link™ SCM Simple Communication Module Installation Guide

Table of Contents

Introduction	5
Installation	5
Mounting.....	5
Wiring	6
Adding the device	6
Perform network test.....	7
Transmission test (optional)	7
Factory reset.....	7
Status indicator	7
Getting started with Danfoss Link™ SCM.....	8
Technical specifications	9
Disposal instructions.....	9

Introduction

The Danfoss Link™ SCM (Simple Communication Module) is an electronic controller for turning the Away function ON/OFF in a Danfoss Link™ system.

The Danfoss Link™ SCM is powered by 230 V~.

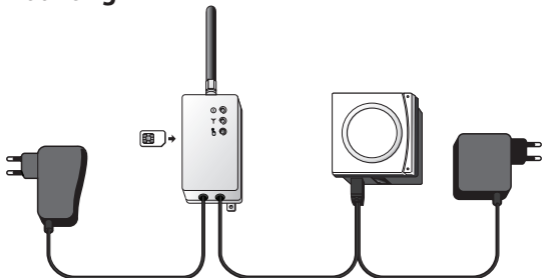
Installation

The Danfoss Link™ wireless system's transmission range is sufficient for most applications; however each building has different obstacles affecting communication and maximum transmission distance.

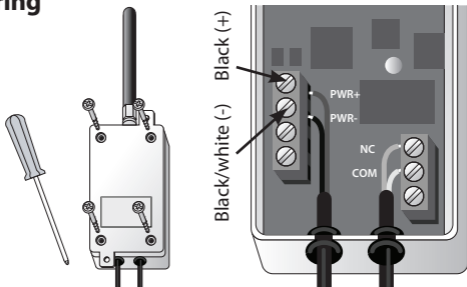
If communication problems occur Danfoss suggests to support the system with repeaters. In exceptional cases the wireless system may not be suitable for your installation.

Note: Be aware that installation and placement must be according to local building regulations.

Mounting



Wiring



Note: Refer to the Danfoss Link™ Mobile Phone Butler (Danfoss Link™ MPB) manual for wiring connections to the Danfoss Link™ MPB.

Adding the device

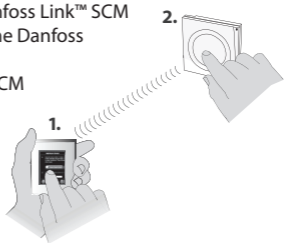
The process of adding the Danfoss Link™ SCM to a system is performed on the Danfoss Link™ CC.

Note that the Danfoss Link™ SCM must be added as a **Service Device**.

When adding, press and release the install button, and observe that the LED gives a fast green flash.

If adding is successful the LED turns green (HOME) or red (AWAY) permanently - depending on input stage.

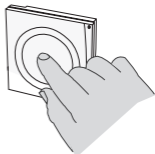
For further information, see the Danfoss Link™ CC installation guide.



Note: If adding the Danfoss Link™ SCM to the Danfoss Link™ CC is unsuccessful, make sure the right Danfoss Link™ CC software version is applied. Correct version: 2.5.57 or higher.

Perform network test

Once the Danfoss Link™ SCM and all other devices in the system have been registered and the Danfoss Link™ CC is placed in its final position, perform a full **network test** (see separate Danfoss Link™ CC manual).



GB

Transmission test (optional)

Initiate a transmission test on the Danfoss Link™ SCM by pressing and holding the install button for more than 2 seconds. If the test is satisfactory the green LED will flash and a message is displayed on the Danfoss Link™ CC. If the test fails the red LED will slow flash continuously.

Factory reset

Turn off the power to the device, then press and hold the install button in front of the device for approx. 5 seconds while the power is switched on again. The button must be held until LED gives a red flash.

Status indicator

Green LED ON	Away OFF
Red LED ON	Away ON
Green LED fast flash	Adding or link test
Green LED short flash	Ready for adding
Red LED slow flash for 5 seconds	Adding not OK
Red LED slow flash continuously	Transmission test not OK or lost connection to Danfoss Link™ CC

Getting started with Danfoss Link™ SCM

The away temperature can only be set on the Danfoss Link™ CC, default setting is 15° C.

A SIM-card for the Danfoss Link™ Mobile Phone Butler is not included. Before inserting the SIM-card please remember to disable the PIN-code.

System test

After installation it is recommended to perform a system test by texting (0000#0) to the Danfoss Link™ MPB in order to set the Danfoss Link™ system to AWAY mode (OFF).



On the Danfoss Link™ MPB and the SCM the AWAY mode is indicated by a red LED. On the Danfoss Link™ CC the AWAY mode is indicated by the suitcase icon.

After 10 minutes the AWAY mode screen will be replaced by the Standby screen for security reasons.

Send another text message (0000#1) to revert the system to the HOME mode (ON). The LED turns green and the AWAY icon disappears. See the Danfoss Link™ MPB User Manual for further information.

Smartphone app

For Android phones and iPhones you can download the **Danfoss ButlerApp** for easy communication with the Danfoss Link™ MPB.



Other ON / OFF devices like sensors, manual switches, etc. can also be used and connected to the SCM for turning AWAY mode ON / OFF in the Danfoss Link™ system. The ON / OFF device must be connected to the SCM via its NC and COM slots.

Technical specifications

Operating voltage Danfoss Link™ SCM	8 - 32 VDC
Operating voltage (Net adapter)	220 - 240 V~, 50 Hz
Standby consumption	0.9 W
Ambient temperature	0° to +45°C
Transmission frequency	868.42 MHz
Transmission range in normal buildings	Up to 30 m
Transmission power	Max. 1 mW
Pollution degree	2
Ball pressure test temperature	75°C
Software classification	Class A
IP class	20
Dimensions	80 × 80 × 30 mm

GB

Disposal instructions





Danfoss A/S
Heating Solutions
Haarupvaenget 11
8600 Silkeborg
Denmark
Phone: +45 7488 8000
Fax: +45 7488 8100
Email: heating.solutions@danfoss.com
www.heating.danfoss.com

Danfoss can accept no responsibility for possible errors in catalogues, brochures and other printed material. Danfoss reserves the right to alter its products without notice. This also applies to products already on order provided that such alterations can be made without subsequent changes being necessary in specifications already agreed.
All trademarks in this material are property of the respective companies. Danfoss and the Danfoss logotype are trademarks of Danfoss A/S. All rights reserved.
